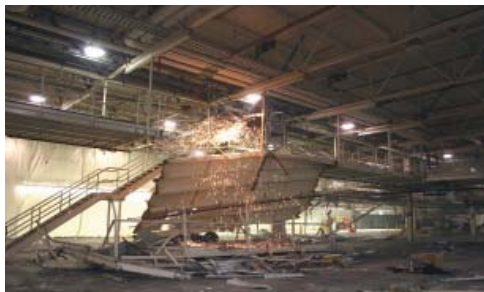




Spartanburg Plant



OWNER | BMW Manufacturing Company

LOCATION | Greer, South Carolina

FACILITY TYPE | Automobile manufacturer

PROJECT BACKGROUND

BMW Spartanburg Plant is the company's only production facility located in the United States. The plant originally produced three models; X5 Sports Utility Vehicle, Z3 and Z4 Roadsters. BMW elected to modernize their assembly line to allow rotation between building these three models and the new models Z3 SUV and X6 Sports Activity Coupe.

Brandenburg was contracted to perform the fast track selective demolition of the assembly line conveyor system. The work was completed in two phases with one month scheduled between. The first phase consisted of a work crew with 110 Brandenburg employees. Work began on a Friday night and finished less than 48 hours later on Sunday afternoon. The second phase consisted of 85 employees, completing the project in less than two days.

SCOPE OF WORK

Completed project on accelerated time schedule during weekend outages

Installed a plastic curtain dust barrier to separate the demolition site area from an adjacent active assembly line

Performed utility disconnections and re-routes

Removed all obsolete equipment, utilities, and structures from the floor to the ceiling trusses throughout the 335,000 square foot production area

Filled pits and other voids left by removed equipment with concrete or steel covers to establish a finished slab base for the new assembly line

Brandenburg®